



BY

NC

# Introduction to:



with

Professor Your  
Name

# SHOW PEOPLE!

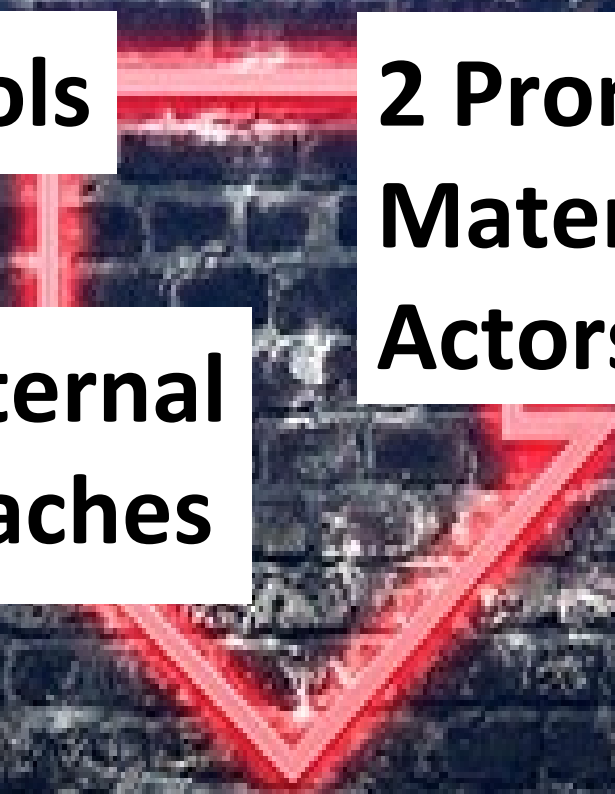


# QUIZ

**3 Actor's Tools**

**2 Promotional  
Materials for  
Actors**

**Internal v. External  
Acting Approaches**



# Auditions



# Playwright

\* \* \*

## Salary wage estimates for authors and writers in general

	10%	25%	50%	75%	90%
Hourly mean	\$13.61	\$19.29	\$27.77	\$40.48	\$56.27
Annual mean	\$28,310	\$40,130	\$57,750	\$84,190	\$117,050

## Play Formats

Comedy  
Farce  
Satirical  
Tragedy  
Historical

## Famous Playwrights

Euripides, Ancient Greece  
Bertolt Brecht, Germany  
August Wilson, USA  
Samuel Beckett, USA and France  
Henrik Ibsen, Norway  
Eugene O'Neil, USA  
Arthur Miller, USA  
Tennessee Williams, USA  
Anton Chekhov, Russia  
William Shakespeare, England

There are twice  
as many male  
playwright as  
female ones

## Did you know?

Wright comes from  
archaic English meaning  
a craft artist

# David Henry Hwang:

“There’s no formula for how to write a good play. Nobody knows what’s going to be successful, even if you define success commercially, artistically. So, you therefore have to fall back on writing what you’re really interested in, what you really believe in, and that makes the plays unique and idiosyncratic. And paradoxically, if you don’t think about trying to be successful, your play is more likely to be a success!”





## Choose a Genre

- **Farce**
- **Comedy**
- **Tragicomedy**
- **Drama**
- **Tragedy**
- **Mixed Forms**

# Framework of Reference

what  
where  
when







# Characterization











The perfect little, beautiful in its simplicity, all-impossible in taste, was a reasonable price for £, and you will witness the birth of a business the size of which the world has never seen!

**The City Building, 1924.** City incorporated the company's New York subsidiary, opened at 714 Fifth Avenue in 1913. City commissioned Laque to design the interior design (now lost) for the building as well as its Art Deco inspired windows. The grand scale of the window's design and its evolution were a remarkable achievement for a fledgling glove-maker accustomed to working on the scale of a jewelry shop. In his design, Laque effectively packaged the business in packaged City's perfumes.

Two perfume bottles in clear and frosted glass with black, circa 1920. Right: Orange jewelry box in red and black with large enamel patina, circa 1912. Other pieces of collaboration Laque designed for City products.







# Elements of Plot

- Characters
- Central Problems
- Conflict & Resolution
  - Protagonist against another person
  - Protagonist against self
  - Protagonist against society
  - Protagonist against the forces of nature

# Elements of Plot

## Conflict

a struggle between opposing forces that drives the action of the story

## Exposition

the introduction of the characters and the basic situation

the portion of the story where the conflict increases

Rising Action

## Climax

the peak of action and conflict

Falling Action

the portion of the story where the conflict decreases

## Resolution

the outcome of the conflict

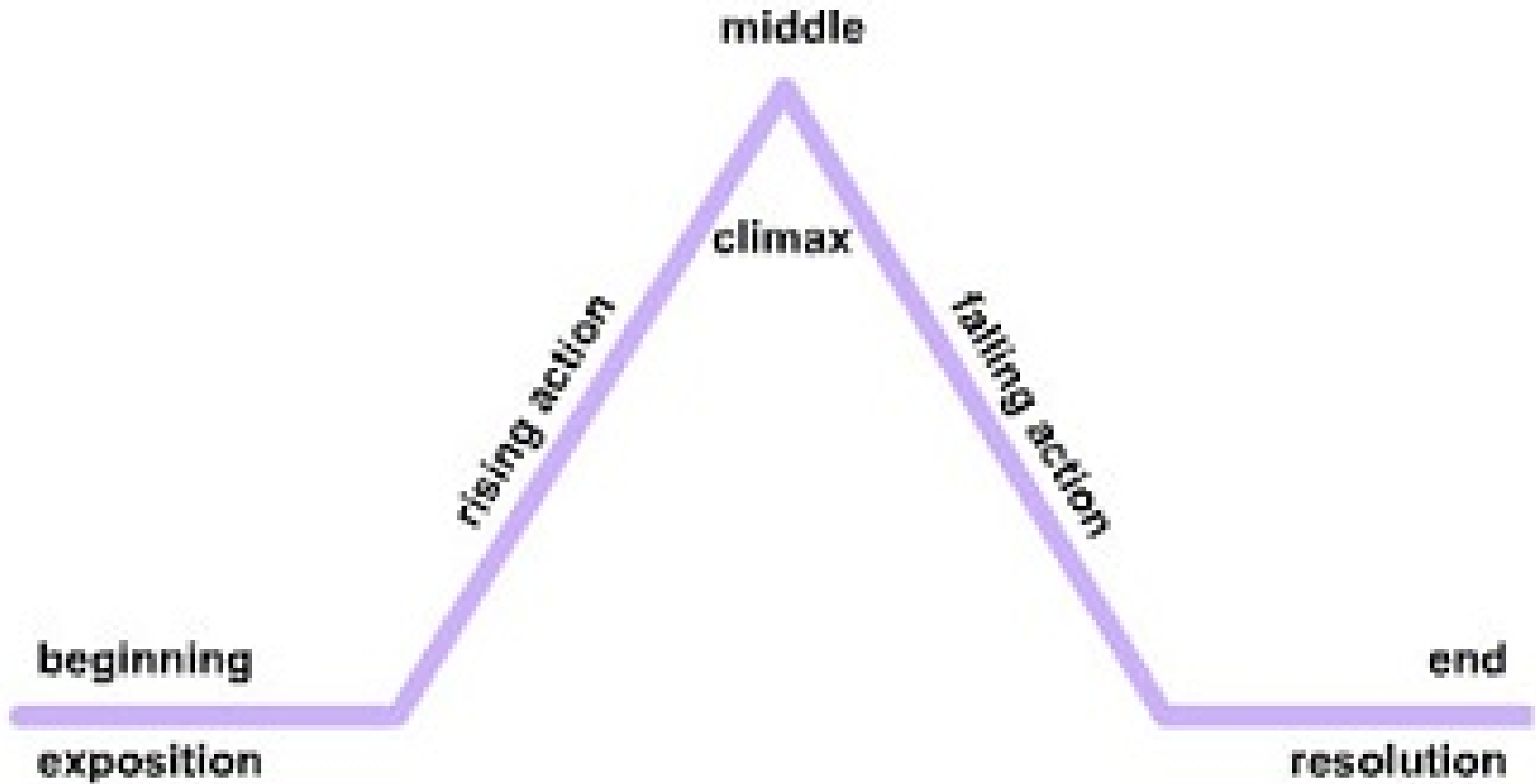


# The Real Inspector Hound

# Introduce the Conflict

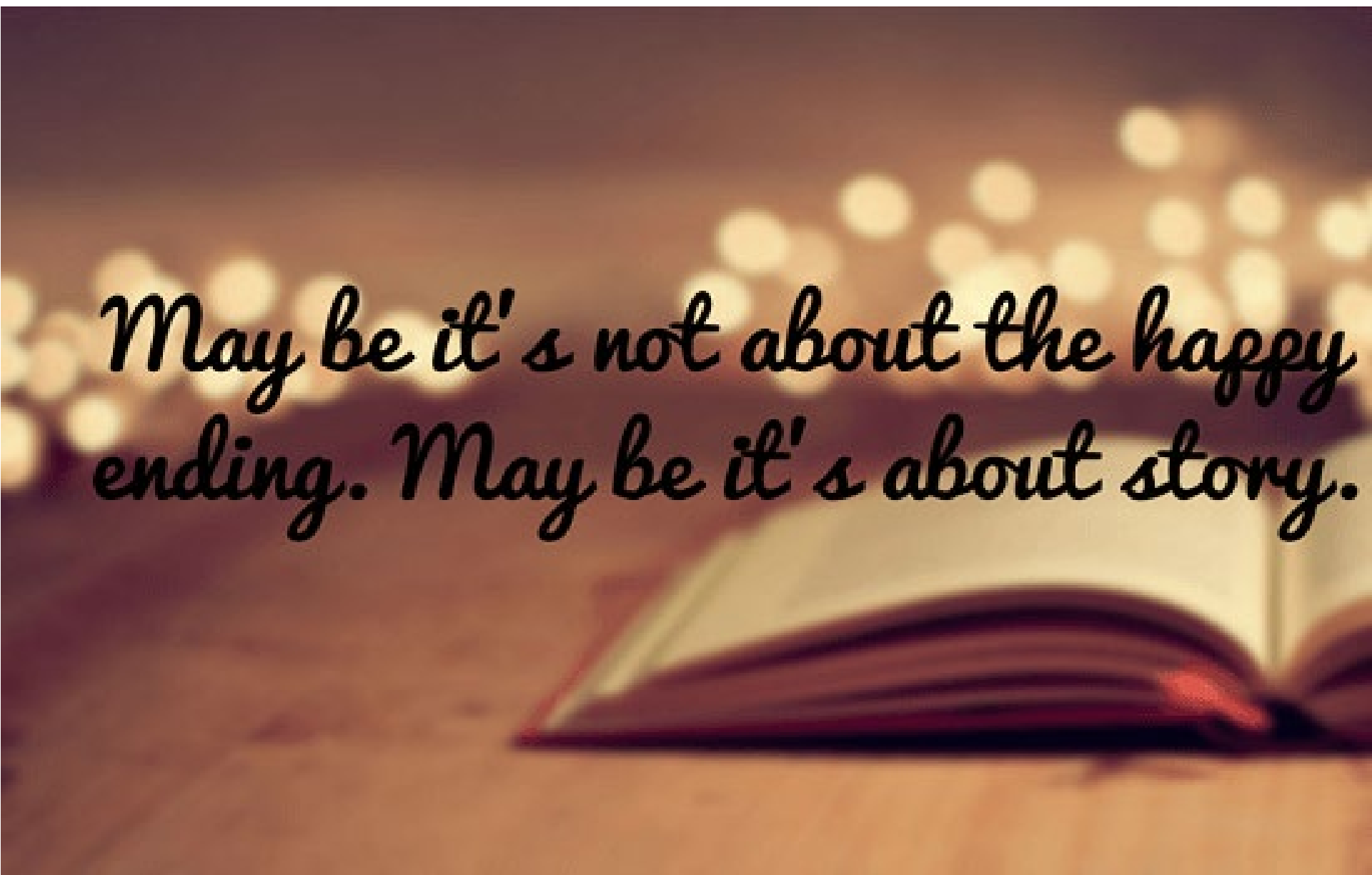


# Climax



# Resolution

Maybe it's not about the happy ending. Maybe it's about story.



How Does

this all  
end?

# Dialog

ACT I

SCENE 1

*The football-club locker-room. The locker-room is dark and empty. The main lights are switched on. OLD JOHN and TONY enter stage right. OLD JOHN is walking with the help of a stick.*

OLD JOHN      New paint job is it?

TONY            New paint. New benches. New lockers. Even got new soap for the showers.

OLD JOHN      *(Sits on a bench)* I don't recognise anything anymore. Except the smell.

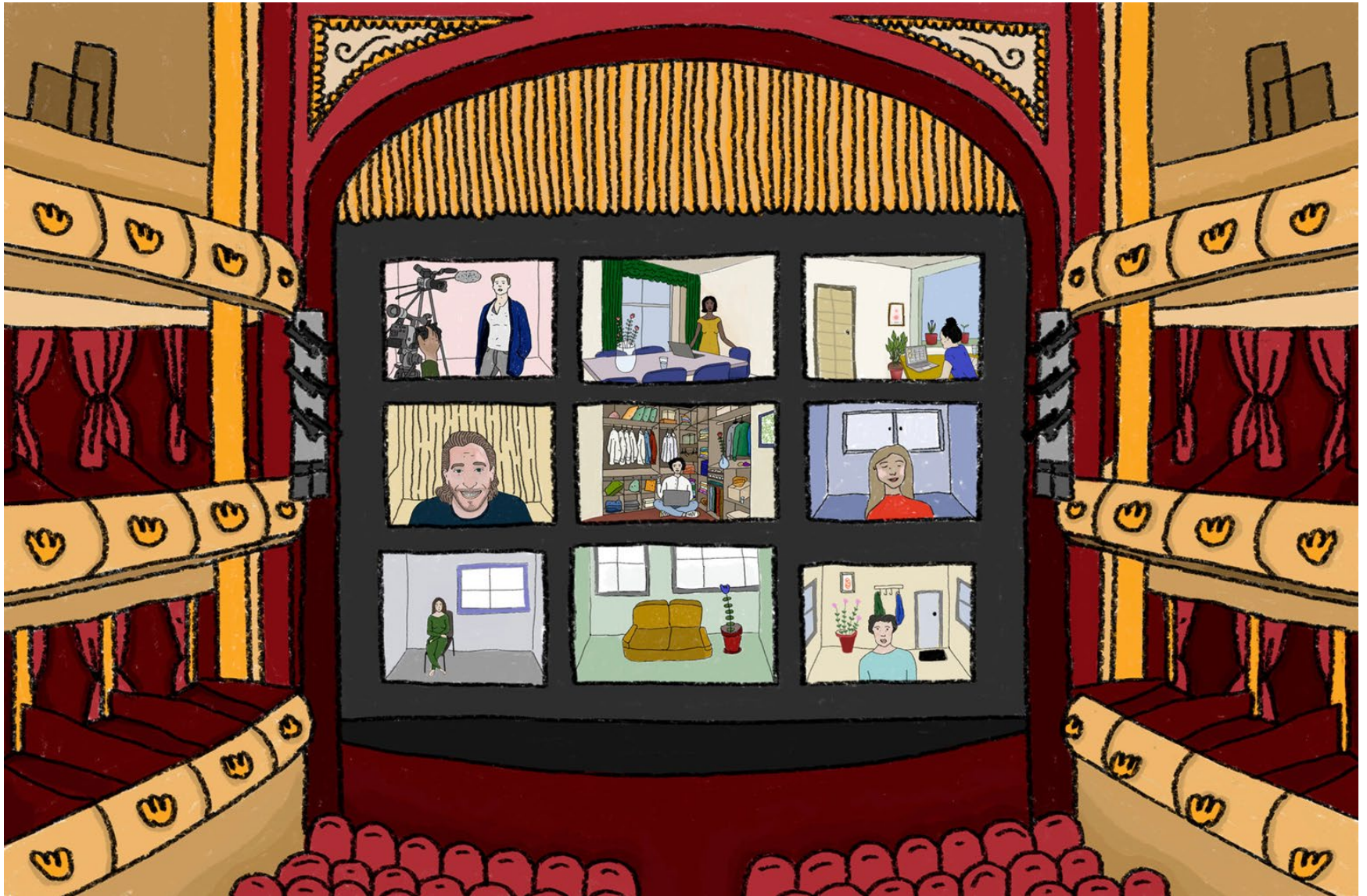
TONY            Don't suppose that ever changes.

*(BRIAN enters stage left. BRIAN is wearing a tracksuit. He's been on a run and looks flushed; out of breath.)*

BRIAN          Hi, Tony. Who's your boyfriend?



# Mini Play: Zoom Call



Rebecca - Title: Trip to the Bank

**Vlad:** Hi Mom, What's up?

**Mom:** Hello dear. Just checking that you are on your way to the bank.

**Vlad:** I'm heading there now!

**Mom:** Be careful now, and make sure nobody sees you.

**Vlad:** I paid off the security guard. Besides, who's going to see me at three in the morning?

**Mom:** It's getting close to sunrise. Are you sure you can make it in time?

**Vlad:** Yeah, I'm almost to the bank now. You want type A, right?

**Mom:** Yes, and O-negative, if they have it.

**Vlad:** Great. Leave a coffin open for me, and I'll be home soon. Love you!

**Mom:** Love you too.

# Samantha - The Bomb!

Mark: Did you blow it up already?

John: Not yet.

Mark: Where are you right now?

John: About to walk in.

Mark: Did you think this through?

John: yes, I have to go right now! I'll call you when I get back to the station.

Mark: Wait, What if someone sees you?

John: They won't. I'll be in and out.

Mark: Don't leave behind any evidence.

John: I won't.

Mark: Okay make sure you flush twice and spray behind you.

John: I got this! The boss will never know I used his bathroom

# Francoise - The Aisle:

\*phone rings\*

**Dana:** \*picks up phone\* Hello

**Junel:** Girl guess what I'm finally walking down the aisle next month. You coming right?

Dana: Wait what? Already! Don't you think it's too soon?

Junel: No! You knew I been planning this for months.

Dana: I think you need to think this through.

Junel: What is there to think about I finally made my decision.

Dana: I guess. I still think this is rush.

Junel: How we always go away around this time.

Dana:Wait what are you talking about?

Junel: We walking down the plane aisle duh. Wait you thought I was getting married to him.\*laughing hysterically\*

Dana: Bye Junel. I don't have time for this foolishness.\* proceeds to hang up\*

Junel: \*shouts\* WAIT! \*thinking to herself\*Did she really just hang up on me?

Dana:\*talking to herself\* she couldn't just say that we was going on vacation.

# Mini Play: Zoom Call

1. Think of a scenario that can be communicated largely through exposition of two people talking on the phone.
2. Decide on your characters.
3. Craft a short scene with 10+ lines of dialogue. The two characters should alternate speaking, and their names should be bold to make it easier to see them.
4. Give your mini play a title at the top.

**\*\*Due by...**

# Review:

- Protagonist against another person
- Protagonist against self
- Protagonist against society
- Protagonist against the forces of nature

**HW:**

## **Digital Theatre+ Options**

**Mind the Gap (1:09)** - three people are trapped in a subway station underground in London

**The Woodsman (1:12)** - musical. The story of the Tin Man from the Wizard of Oz

**Pipeline (1:26)** - an African-American woman fights for her son's future

**Liberty, Equality, Fraternity (1:24)** - Australian comedy where a young mother is interrogated by government officials.