



Introduction to:



with

Professor Your
Name



QUIZ

**Rent v.
Own**

**Greatest
lighting
designer?**

**Illuminate
Mood
Focus
Creates Set**

Costume Designer





An Ideal Husband
Miss Mabel Chibben - Abigail Anderson
Act 2



An Ideal Husband
Mrs. Chereley - Chereley Hubbard
Act 2



An Ideal Husband
Lady Chibben - Abigail Anderson
Act 4



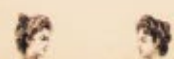
An Ideal Husband
Abigail Anderson



An Ideal Husband
Mrs. Chereley - Chereley Hubbard
Act 3



An Ideal Husband
Mrs. Marchmont - Kai Cannon
Act 1



An Ideal Husband
Lady Markby - Olivia Coppock
Act 1



1900
)

1900-1910
(A)

1900-1910
(B)

1910-1920
(A)

1910-1920
(B)





Heather
-American Idiot

"Dearlly beloved,
are you
listening? I
can't remember a
word that you
were saying."

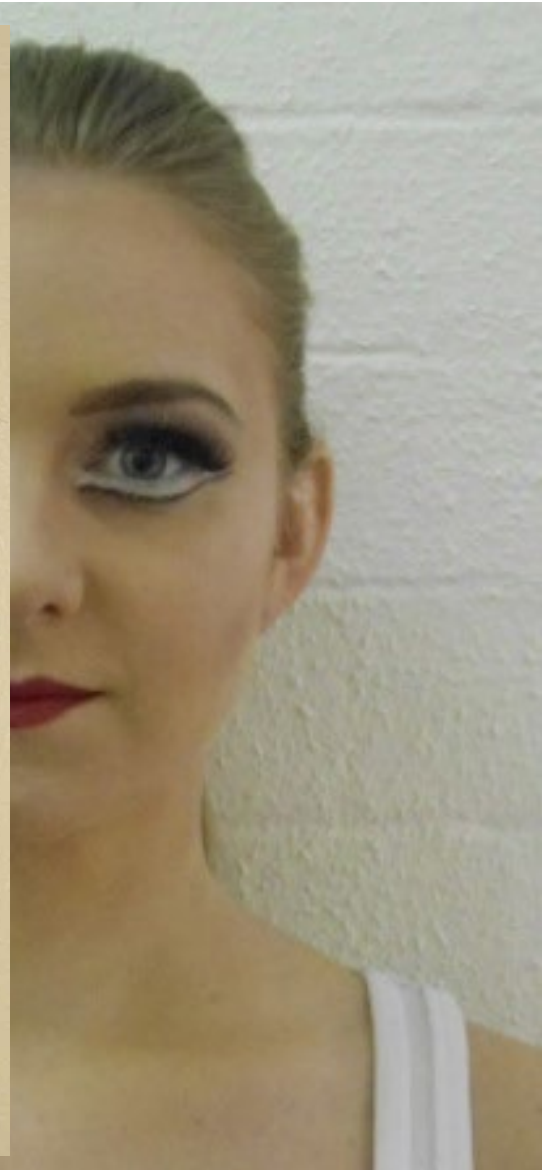




Makeup Designer



Straight Make-Up



Beetlejuice on Broadway



Character Make-Up



Beetlejuice on Broadway



Stylized Make-Up



Beetlejuice on Broadway



A vibrant, cartoon-style illustration of a party scene. The background is a light gray with various colorful elements: a burger with a slice of watermelon, a slice of pizza with a mouse on it, a hot dog with a blue ribbon, a donut with blue liquid being poured over it, a red and white striped hat, a green drink with a red base, and a red and white striped shoe. There are also musical notes and a blue ribbon swirling through the scene. The text "YOUR WORK HERE" is overlaid in the center in a large, white, sans-serif font.

YOUR
WORK
HERE

Review

- Costumes: built v. pulled
- Built Costume Design - steps
- 3 types of makeup looks for the stage
- Makeup design - steps

HW:

- TAKE the quiz on Cowboy Versus Samurai by the end of the day on Thurs