

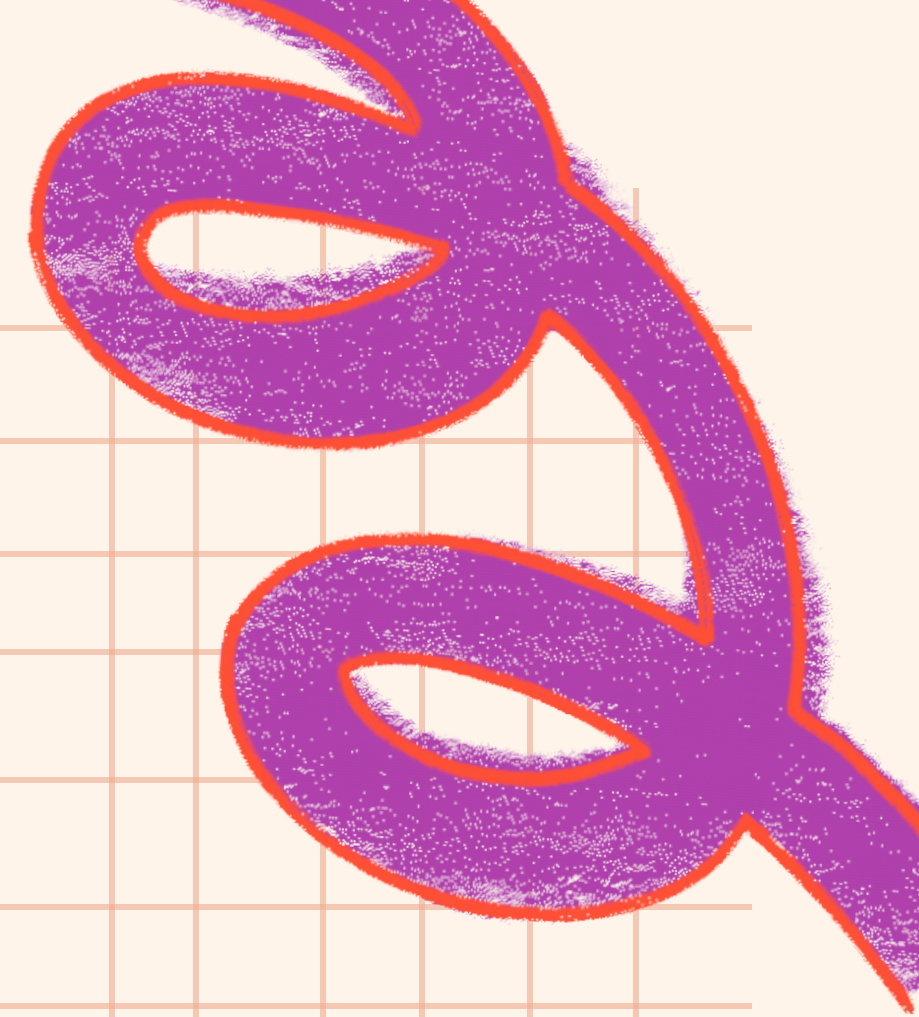
Advocacy Pitch

for Autism!

BY: Destiny Powe



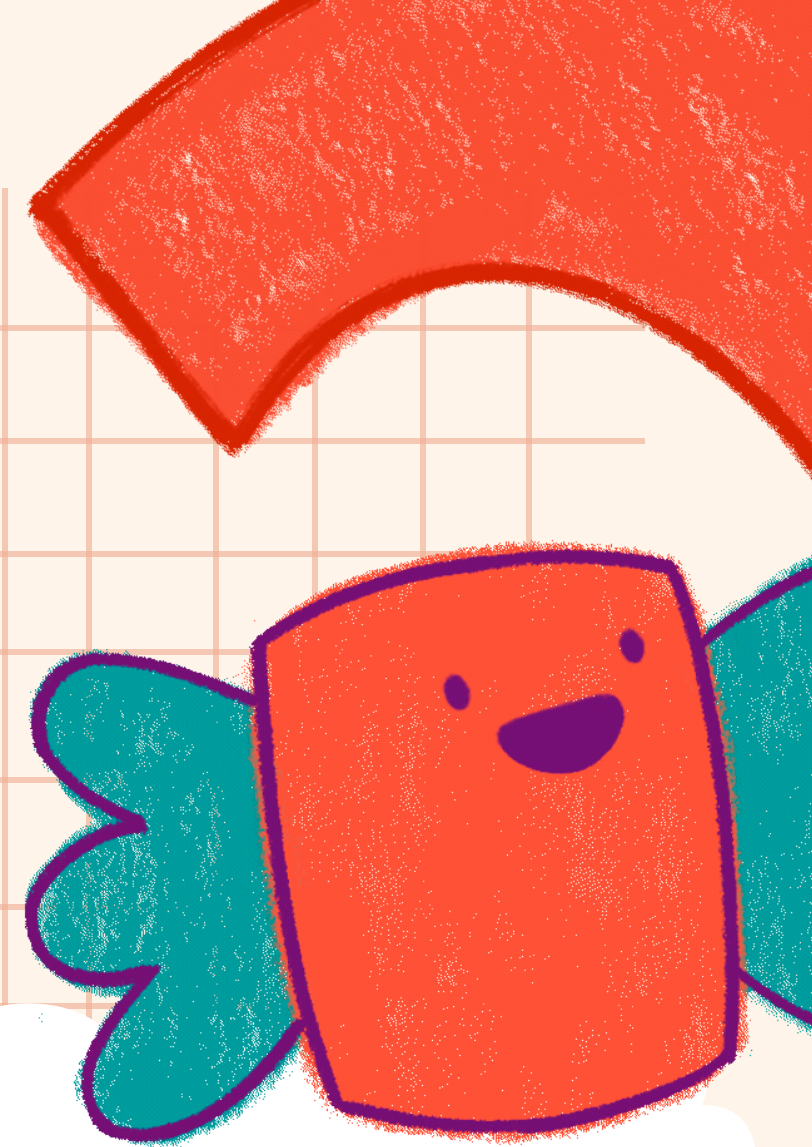
What is Autism?



Autism spectrum disorder (ASD) is a neurological and developmental disorder that affects how people interact with others, communicate, learn, and behave. Although autism can be diagnosed at any age, it is described as a “developmental disorder” because symptoms generally appear in the first 2 years of life.



ASD



ASD ?

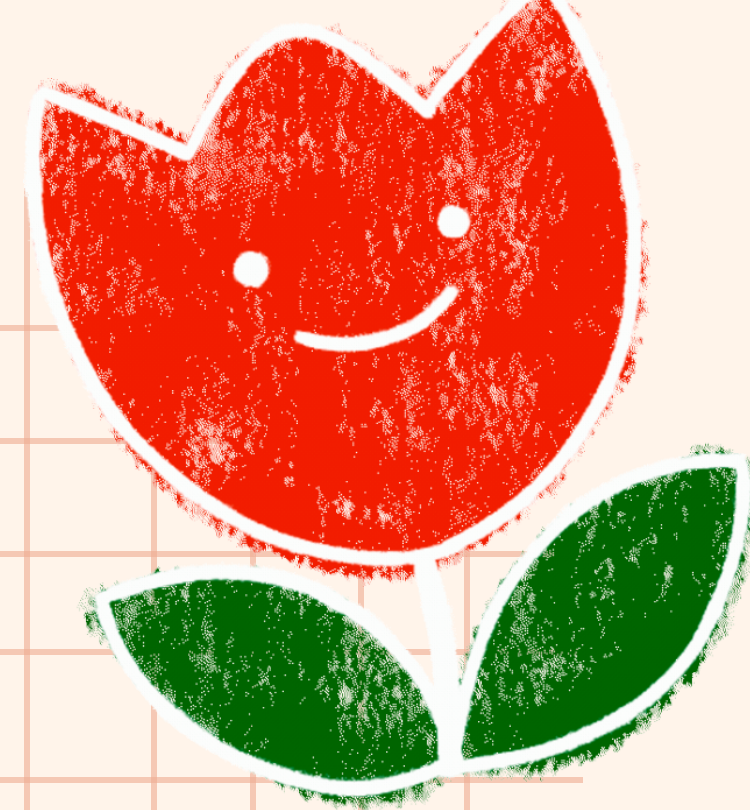
Autism spectrum disorder (ASD) is a developmental disability caused by differences in the brain. People with ASD often have problems with social communication and interaction, and restricted or repetitive behaviors or interests.

characteristics

People with ASD may also have different ways of learning, moving, or paying attention..

Prevalence

About 1 in 36 children has been identified with autism spectrum disorder (ASD) according to estimates from CDC's Autism and Developmental Disabilities Monitoring (ADDM) Network.



Importance of early identification and intervention for ASD

1.

Early diagnosis and treatment of ASD can make a big difference in your child's life. Behavioral therapy is an important treatment for many children with autism.

2.

Time and time again, studies have shown that the early diagnosis and intervention of autism, occurring around or near preschool age, is more likely to have major long-term positive effects on symptoms and the development of later skills.





Screening tools for teachers

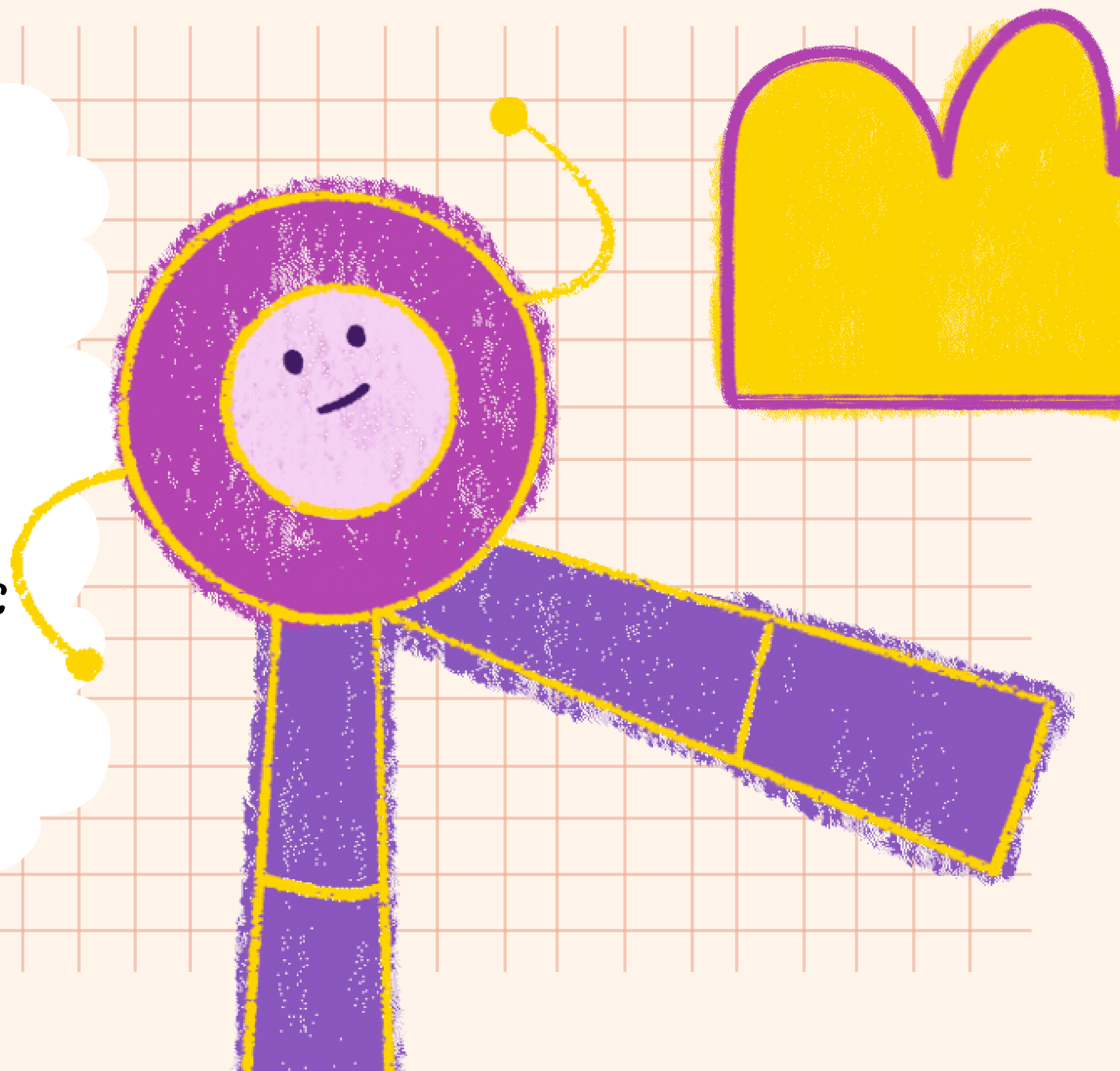
Classroom teachers can make a number of accommodations to support autistic children. One important strategy is to provide a quiet and structured learning environment that helps children feel safe and focused. Teachers can also break down tasks into smaller steps to help students understand and complete assignments more easily



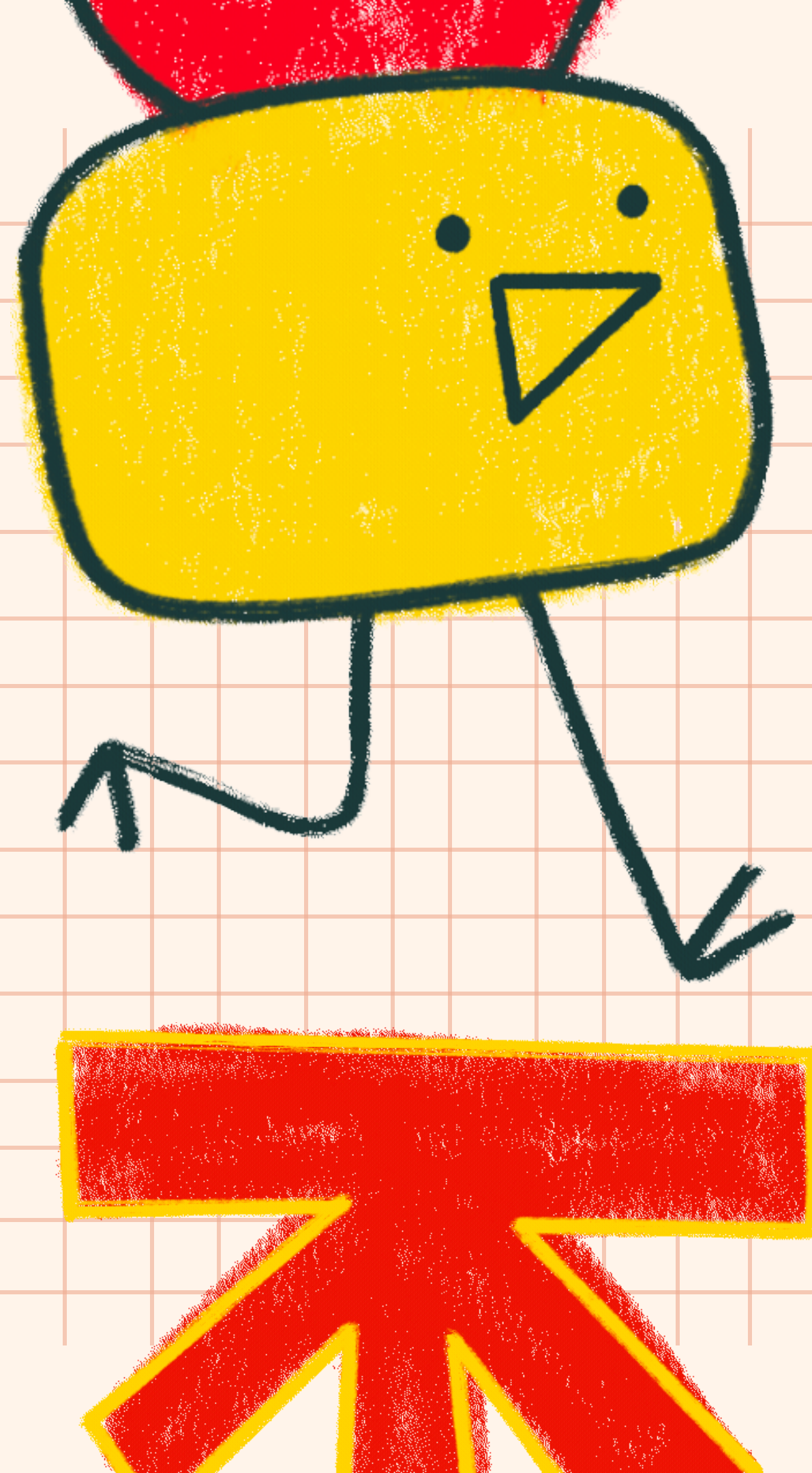
Screening tools for parents

1. Modified Checklist for Autism in Toddlers (M-CHAT): A simple questionnaire that can be filled out by parents to identify early signs of autism in toddlers.
2. Autism Diagnostic Observation Schedule (ADOS): A standardized assessment tool that is administered by a trained professional to diagnose autism.

The development of your kid can be significantly changed by an early diagnosis and course of ASD treatment. Many autistic children benefit greatly from behavioral therapy.



Let us spread more awareness to Autism in preschoolers!



<https://www.maximhealthcare.com/healthcare-blog/the-importance-of-early-intervention-for-autism/#:~:text=Early%20diagnosis%20and%20treatment%20of,skills%20later%20on%20in%20life.>