

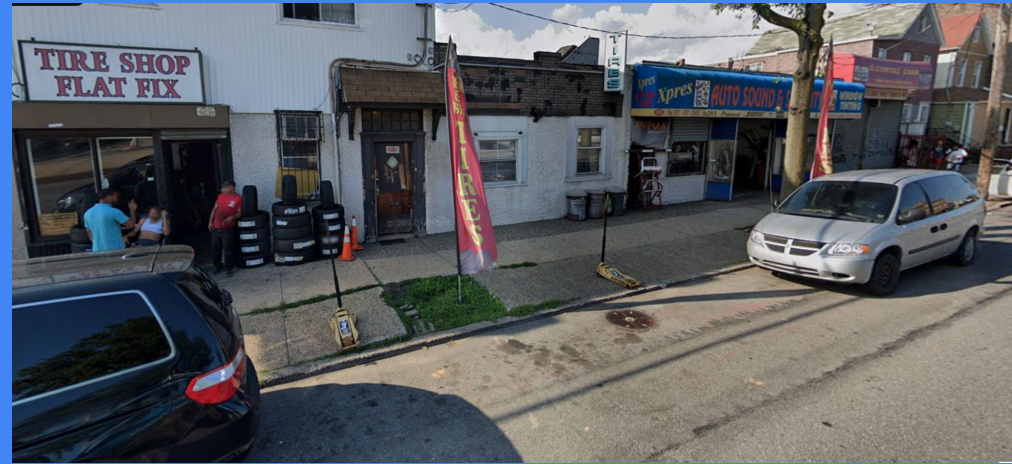
# Increase In Crime, Queens

What Could Be a Cause To Crime?



# Richmond Hill

Richmond Hill is mostly a residential area. The area where I live is between Jamaica ave, mostly composed of mom-and-pop stores, and Atlantic ave. Atlantic ave mostly composed of car repair shops and tire replacement.



# Crime Rates in Richmond Hill

Patrol Borough:  Precinct:

	Week to Date			28 Day		
	2023	2022	% Chg	2023	2022	% Chg
Murder	0	0	0.0 %	0	0	0.0 %
Rape	1	0	- %	1	3	-66.7 %
Robbery	5	4	25.0 %	14	12	16.7 %
Felony Assault	10	4	150.0 %	33	25	32.0 %
Burglary	4	1	300.0 %	16	9	77.8 %
Grand Larceny	6	9	-33.3 %	19	27	-29.6 %
Grand Larceny Auto	3	4	-25.0 %	17	18	-5.6 %
<i>Total</i>	29	22	31.8 %	100	94	6.4 %

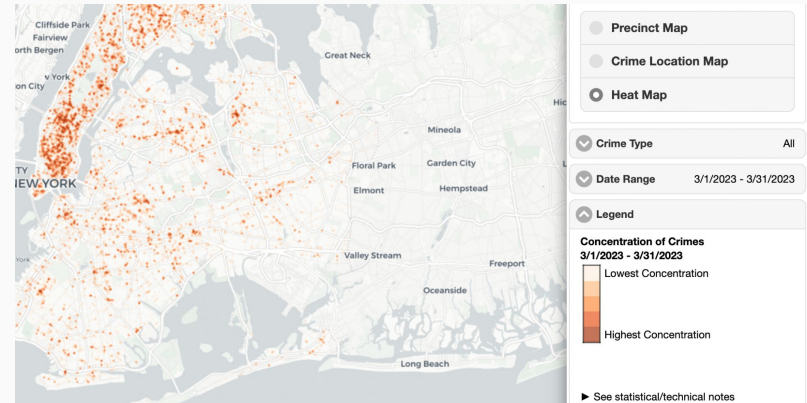
Felony crimes has increased a total of 31.8% over the course of 1 year.

# What Is a Cause To Crime?

One of the main causes why crime is committed is because of poverty.

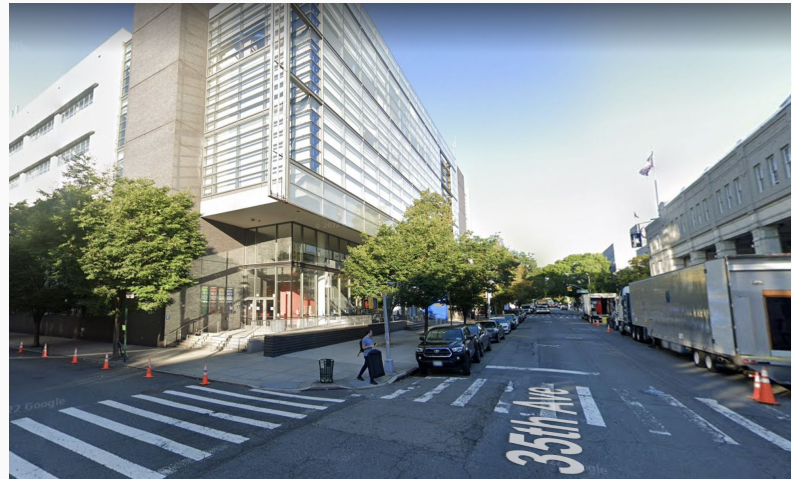
- Reasons like lack of economic opportunities, lack of education, and poor living conditions can contribute to poverty being a big significant contributing factor of crime.

Another main factor could be neglected neighborhoods. Areas like Flushing and Astoria, shows sign of disorder, and neglect, reflecting the cause of crime in queens.



# Solutions?

I believe there are multiple solutions. To address poverty, more access to education and job opportunities, particularly in low-income communities. Also, improving more access to affordable housing, healthcare and other basic needs help address poverty and reduce crime rates.





## Solution Pt. 2

Ways to address the issues of neglect and disorder can be by increasing community involvement, and increase the presence of the police. Also addressing vacant properties and social issues like what was discussed in the last slide can aid as a solution to neglect and disorder in a neighborhood. I believe the Broken Windows Theory can be crucial to this step



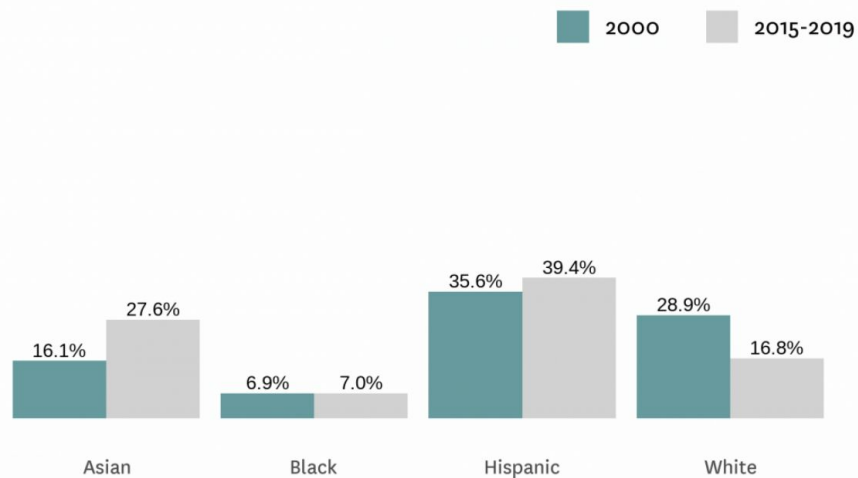
# What is Broken Windows?

The Broken Windows Theory, first proposed by James Q. Wilson and George L. Kelling, argues that addressing small signs of disorder can help prevent more serious crimes from occurring. Signs of disorder vary from graffiti, litter, abandoned buildings, and public intoxication/ drug use. Addressing these signs can prevent bigger crimes, like murders, robberies, etc.



# Demographic on Richmond Hill

## Racial and Ethnic Composition of Kew Gardens/Woodhaven



Sources: Census (2000) and American Community Survey (2019), Furman Center



# How Can We Prevent Crime in Queens?

- More access to education, job opportunities and easier access to basic needs
- Increase community involvement and police patrol around neglected neighborhoods.



# Cited work

- <https://furmancenter.org/neighborhoods/view/kew-gardens-woodhaven>
- <https://compstat.nypdonline.org/2e5c3f4b-85c1-4635-83c6-22b27fe7c75c/view/89>
- [https://www.nyc.gov/assets/nypd/downloads/pdf/analysis\\_and\\_planning/historical-crime-data/misdemeanor-offenses-by-precinct-2000-2022.pdf](https://www.nyc.gov/assets/nypd/downloads/pdf/analysis_and_planning/historical-crime-data/misdemeanor-offenses-by-precinct-2000-2022.pdf)
- [https://www.nyc.gov/assets/nypd/downloads/pdf/analysis\\_and\\_planning/historical-crime-data/seven-major-felony-offenses-by-precinct-2000-2022.pdf](https://www.nyc.gov/assets/nypd/downloads/pdf/analysis_and_planning/historical-crime-data/seven-major-felony-offenses-by-precinct-2000-2022.pdf)
- Wilson, J. Q., & Kelling, G. L. (1982). Broken windows: The police and neighborhood safety. *Atlantic Monthly*, 249(3), 29-38.  
[https://books.google.com/bookshl=en&lr=&id=ukgy47Q8CuMC&oi=fnd&pg=PA277&dq=Broken+windows&ots=DSuFn7\\_Lct&sig=K98OxxU88iIbW4T1P56D9IJNq3Y#v=onepage&q=Broken%20windows&f=false](https://books.google.com/bookshl=en&lr=&id=ukgy47Q8CuMC&oi=fnd&pg=PA277&dq=Broken+windows&ots=DSuFn7_Lct&sig=K98OxxU88iIbW4T1P56D9IJNq3Y#v=onepage&q=Broken%20windows&f=false)