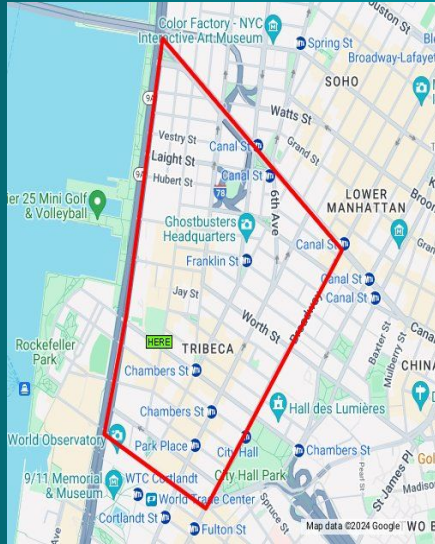


Tribeca

Neighborhood In Manhattan

History and Background



Originally an industrial area with warehouses and factories

Tribeca was named from its geographic location, forming a triangular shape between Canal Street, West Street, and Broadway. The name is an acronym for “Triangle Below Canal Street.”



In the 1980s and 1990s, Tribeca underwent significant redevelopment and gentrification.



Home to textiles and manufacturing industry that attracted businesses looking for large commercial spaces.

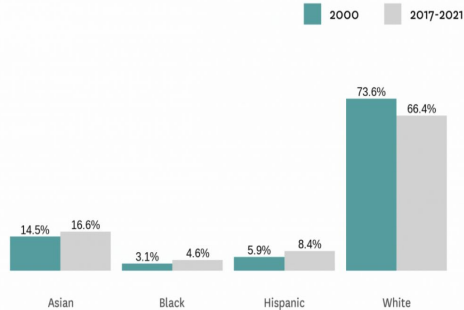
The neighborhood began to transform starting in the 1960s when artists began to move into spaces in the area.

Demographics

DEMOGRAPHICS

In 2021, there were an estimated 146,667 people in Financial District, of which 16.6% identified as Asian, 4.6% identified as Black, 8.4% identified as Hispanic, and 66.4% identified as white.

Racial and Ethnic Composition of Financial District

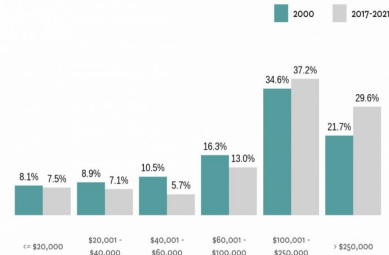


Sources: Census (2000) and American Community Survey (2021), Furman Center



In 2021, the household income group with the largest share (35.8%) of households was \$100,001 - \$250,000. In 2000, the same household income group had the largest share as well, with a slightly lower share of 34.6%.

Household Income Distribution in Financial District (2022\$)



Sources: Census (2000) and American Community Survey (2017-2021) via IPLUMS USA, Furman Center

SHARE:  

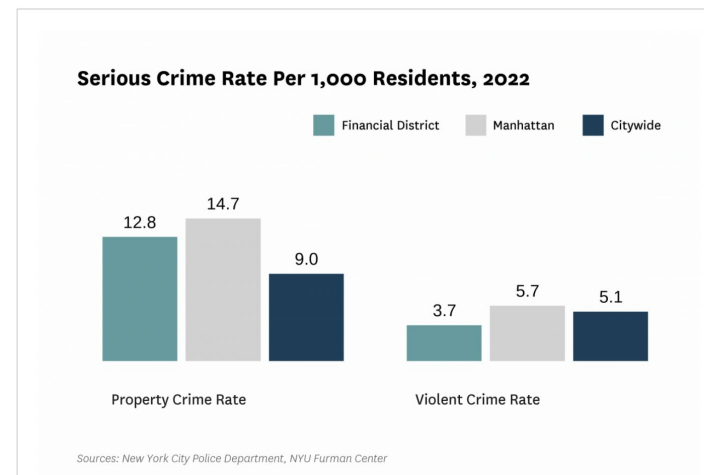
[Download Data \(Excel\)](#)

Median household income in 2021 was \$151,240, about 110% more than citywide median household income (\$72,150). The poverty rate in Financial District was 7.8% in 2021 compared to 18.0% citywide.

Crime Data

CompStat Book			Week of 04/29/24 - 05/05/24			
	Week to Date			28 Day		
	2024	2023	% Chg	2024	2023	% Chg
Murder	0	0	0.0 %	0	0	0.0 %
Rape	1	0	- %	2	0	- %
Robbery	3	1	200.0 %	13	10	30.0 %
Felony Assault	6	4	50.0 %	12	13	-7.7 %
Burglary	5	3	66.7 %	13	13	0.0 %
Grand Larceny	24	24	0.0 %	88	87	1.1 %
Grand Larceny Auto	0	2	-100.0 %	2	8	-75.0 %
Total	39	34	14.7 %	130	131	-0.8 %
Patrol	37	31	19.4 %	122	123	-0.8 %
Transit	2	3	-33.3 %	8	8	0.0 %
Housing	0	0	0.0 %	0	0	0.0 %
Shooting Victims	0	0	0.0 %	0	0	0.0 %
Shooting Incidents	0	0	0.0 %	0	0	0.0 %
UCR Rape*	1	1	0.0 %	2	2	0.0 %
Other Sex Crimes	1	3	-66.7 %	7	11	-36.4 %
Petit Larceny	79	67	17.9 %	337	287	17.4 %
Misd. Assault	6	12	-50.0 %	37	35	5.7 %

The serious crime rate was 16.4 serious crimes per 1,000 residents in 2022, compared to 14.2 serious crimes per 1,000 residents citywide.



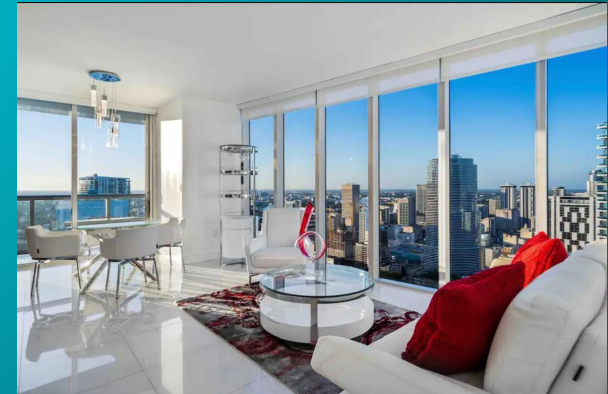
Local Businesses and culture

- Luxury buildings
- Trendy restaurants(Los Tacos one of my favorite)
- Art galleries
- Fashionable boutiques
- The Tribeca Performing Arts Center, located within the Borough of Manhattan Community College.



Culture

- The Tribeca Film Festival: the festival showcases films, including independent productions, documentaries, and

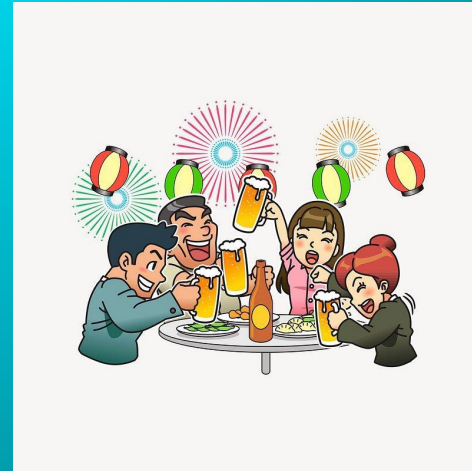
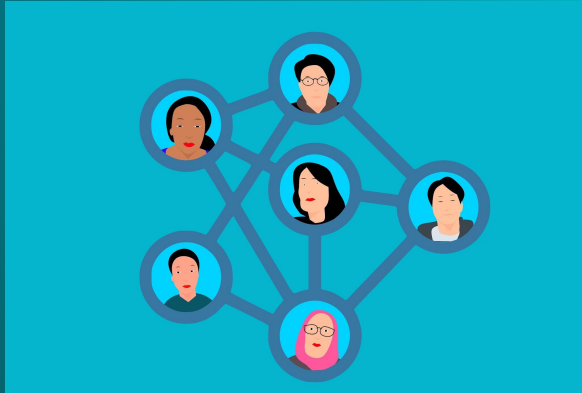


Community Organization

Tribeca Trust:

Mission-

The mission of Tribeca Trust is to educate the public about Tribeca's history and architectural heritage and to mobilize residents and civic resources so as to preserve our neighborhood's historic scale, to protect and enhance its architectural character, quality of life, economic vitality, and sense of place.



Challenges Opportunities

- Students from the Bmcc can apply to work with or in the Major Office due to the partnership the SGA have with Major Adam.
- Internship all year around(fall, winter, spring)
- Modeling agencies
- Working in the art industries



Personal Reflection

Commuting to this neighborhood every morning had inspired me to keep on pushing with perseverance. To reach the dream to become wealthy, well educated and to live life similar to the one in Tribeca (In peace and with multiple sources of income).



Reference

- *Financial District Neighborhood Profile.* furmancenter.org/neighborhoods/view/financial-district/.
- “TriBeCa — CityNeighborhoods.NYC.” *CityNeighborhoods.NYC*, www.cityneighborhoods.nyc.org/tribeca/.
- *Tribeca Trust | About.* tribecatrust.org/about.