

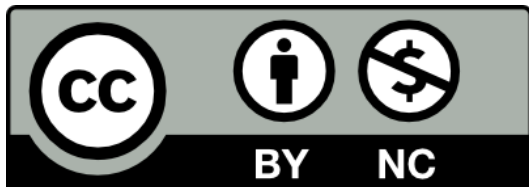


# Business Management

BUS 200 Spring 2022

Business Organizations and Management

Session 9



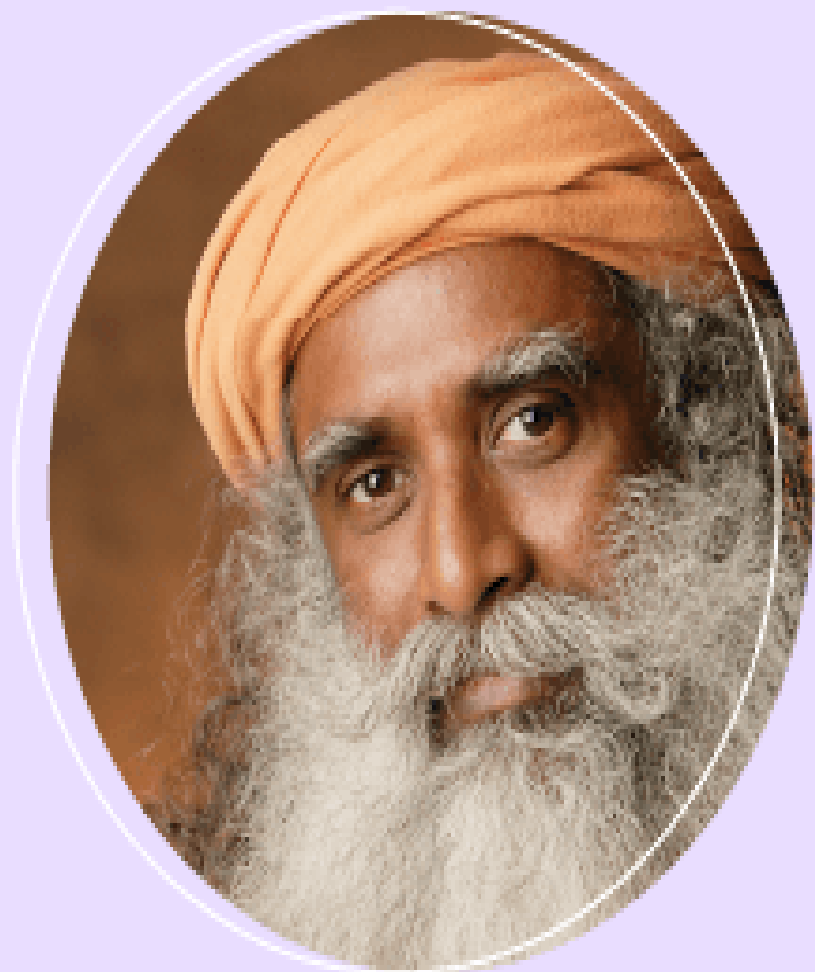
# Session 9 Agenda

Questions/Follow Up

Career/Academic Strategic Plans

The Political Frame

Session 10 Outlook



“

*Integrity, insight, and inclusiveness  
are the three essential  
qualities of leadership.*

**- Sadhguru**

”

Questions – Follow Up

**Any Questions?**  
**Social Justice Week**  
**Progress Report 1**

# Academic & Career Strategic Planning: WHY?

What is Strategic Planning?

<https://www.youtube.com/watch?v=-gcNK-1laiQ>

Question: What does this video do to inform you as to how to create a academic/career strategic plan?

Strategic  
Planning  
ModStarels

---

**SWOT**

---

**SOAR**

---

**Force Field Analysis**

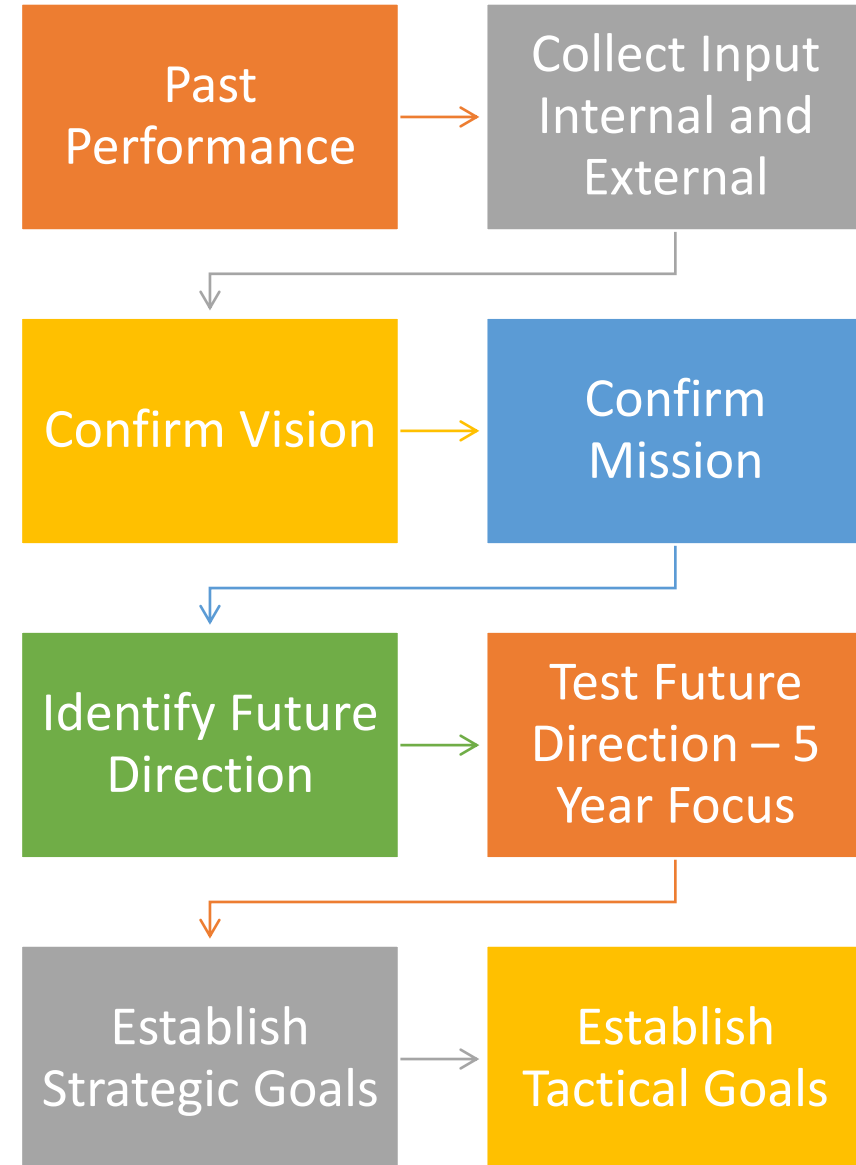
---

**AI**

---

**In Practice**

# Strategic Planning Theory In Practice



# FOUR ORGANIZATIONAL FRAMES

- **STRUCTURE** Roles, Goals, Policies, Alignment
- **PEOPLE** Needs, Skills, Relationships
- **POLITICAL** Power, Conflict, Competition, Politics
- **SYMBOLIC** Culture, Rituals, Heroes, Stories





# The Political FRAME

- **“IT WAS ALL POLITICAL” – HOW DOES THIS STATEMENT DEFINE POLITICS?**
- **Internal Politics and External Politics**
- **CONSTRUCTIVE AND DESTRUCTIVE Politics**
- **POWER – CONFLICT – ETHICS- The Sackler Family**
- **AN EFFECTIVE ORGANIZATION POLITICIAN**

# “IT WAS ALL POLITICAL”

How do you define Organization politics? Give an example.

What have you read in the Wall Street Journal that relates to organization politics?

# Internal Politics and External Politics

Give an example or define Internal Politics.

Give an example or define External Politics.

# CONSTRUCTIVE AND DESTRUCTIVE Politics

Think about a situation where politics was a constructive force and one in which it was a destructive force.

# Power - Conflict - Ethics

Read the NY Times Article <https://www.nytimes.com/2019/04/01/health/sacklers-oxycontin-lawsuits.html>

- ✓ Power
- ✓ Ethics
- ✓ Decision Making
- ✓ Conflict
- ✓ ACTION

**What do you recommend as a constructive political move the Sackler family should consider to address this dilemma?**

# AN EFFECTIVE ORGANIZATION POLITICIAN

**What does an effective  
Organization Politian  
look like? Their  
characteristics.....**



Sessions 10  
04/27  
NO CLASS 04/20

## **PRIOR to start of class on 04/27:**

- Read BP pages 7-16 and consider this question: what are the central issues which you believe contributed to the disaster.
- Complete Case Analysis #3
- Answer Discussion Question #3