

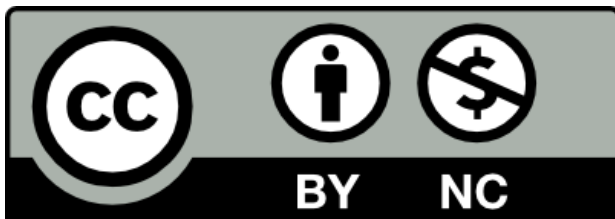


Business Management

BUS 200 Spring 2022

Business Organizations and Management

Session 8



Session 8

- **Review of Last Session**
- **BP – Framing the Case: Chapter 1 –Introduction**
- **Career or Academic Strategic Plan**
- **Session 9 Outlook**

Questions – Follow Up

Any Questions from Last Class?

BP Deepwater Horizon

Deepwater Horizon - 10 Years Later

- **What are the Organization Structure issues evident in this case?**
- **What are the Human Resource issues?**
- **What are the safety issues?**

How did these issues impact the disaster?

BP Deepwater Horizon Case Analysis

Progress Report #1 Due 04/06/22

Did you answer these questions in this order with separate sub-titles:

- **Introduction** **What is Chapter 1 going to cover?**
- **The History of BP** **What was the history of its organization and leadership?**
 What was the history of its organizational structure?
- **The Disaster** **What are the facts/figures – cause and impact?**
- **Summary** **What did Chapter 1 cover?**

Write in the 3rd person – 12pt font

Double space – 1” margins on all sides



BP Deepwater Horizon

Describe the organization and the setting of the case.

Place

People

Impact: lives lost – lives injured – economic - environmental

What was the organizational history of BP?

Public Utility

Private Company

Centralized

Decentralized

What was its current organizational structure prior to the disaster?

Flat

Many subcontractors

Progress Report #1

PROGRESS REPORT I - 05 points

Due 04/06/22 PRIOR to Start of Class

Key Issues:

Briefly describe the case study and the leading issues in this case using the information presented in the case description.

Deliverable:

A three-page (APA style) report that includes: A brief summary of the case and the key issues.

Grading Rubric:

3 points – case summary and key issues identified, well defined, and accurate
2 points – well written in APA format

HOW TO ORGANIZE YOUR FINAL PAPER

(see sample on BB)

- **TITLE PAGE** (name of paper - your name – date - course & section)
- **Abstract** (the last item you add to your paper)
- **Table of Contents**
- **Introduction** (Overview of the case and the **KEY ISSUES Progress Report 1**)
- **Diagnosis (PR 2** Identify the problems – use four frames and 5 principles)
- **Process Problems (PR 3** – what were the key issues? 2-3 related to the frames and/or principles)
- **Redesign/Recommendations** (what do you recommend in order to avoid a similar situation from occurring)

Strategic Planning – WHY?

What is Strategic Planning -

<https://www.youtube.com/watch?v=mLJ34L5UW4E>

Question: What does this video do to inform you as to how to create a career strategic plan. In small break out groups discuss your answers and be prepared to report back to the class

SWOT

SOAR

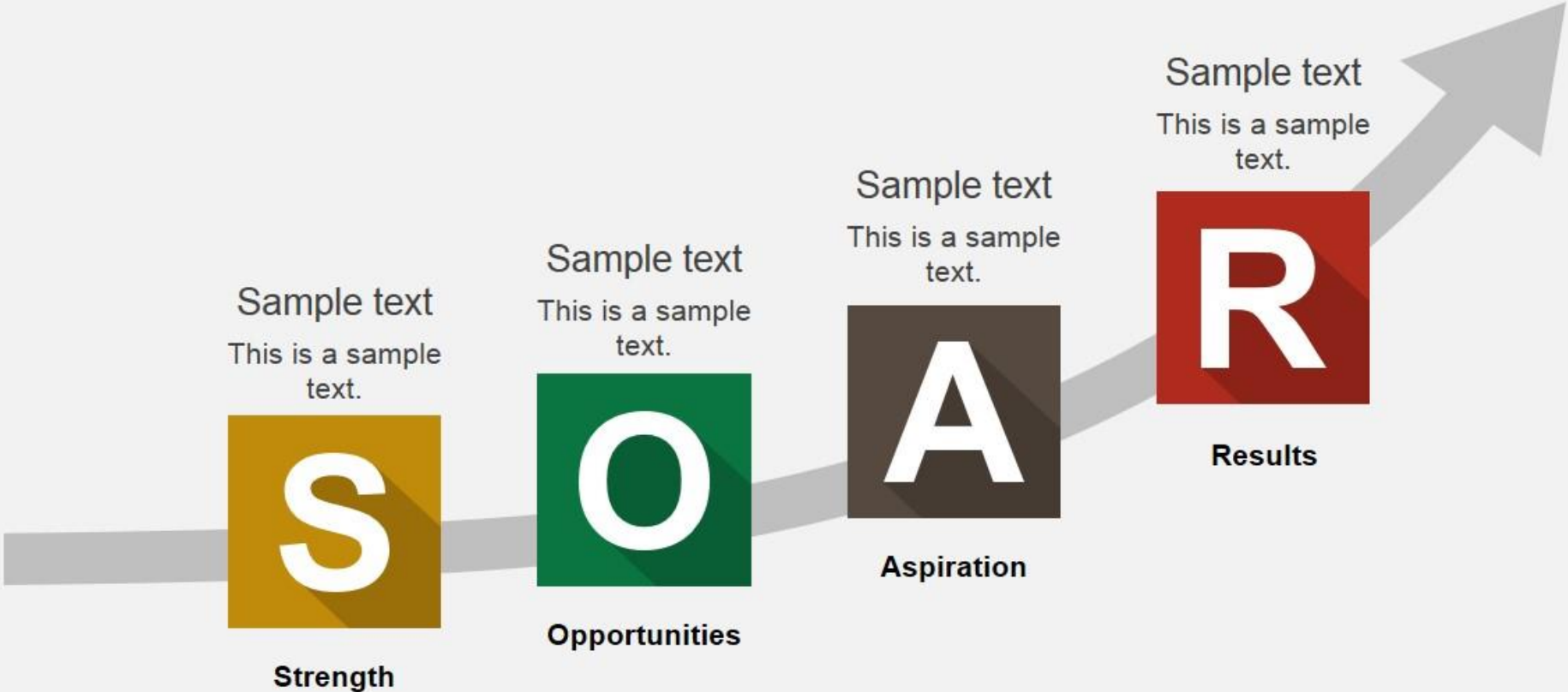
Force Field Analysis

AI

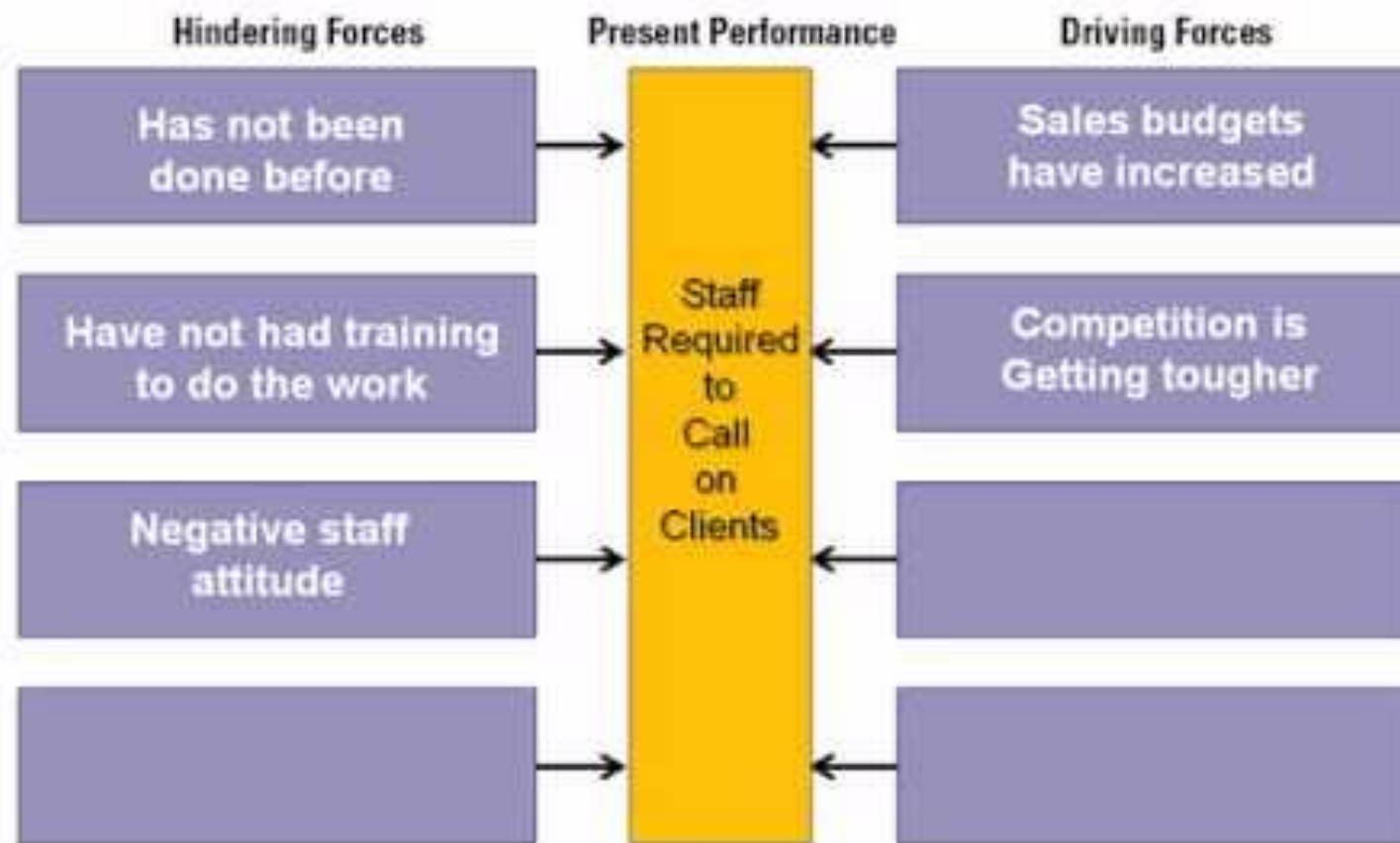
SWOT ANALYSIS



SOAR Model for PowerPoint



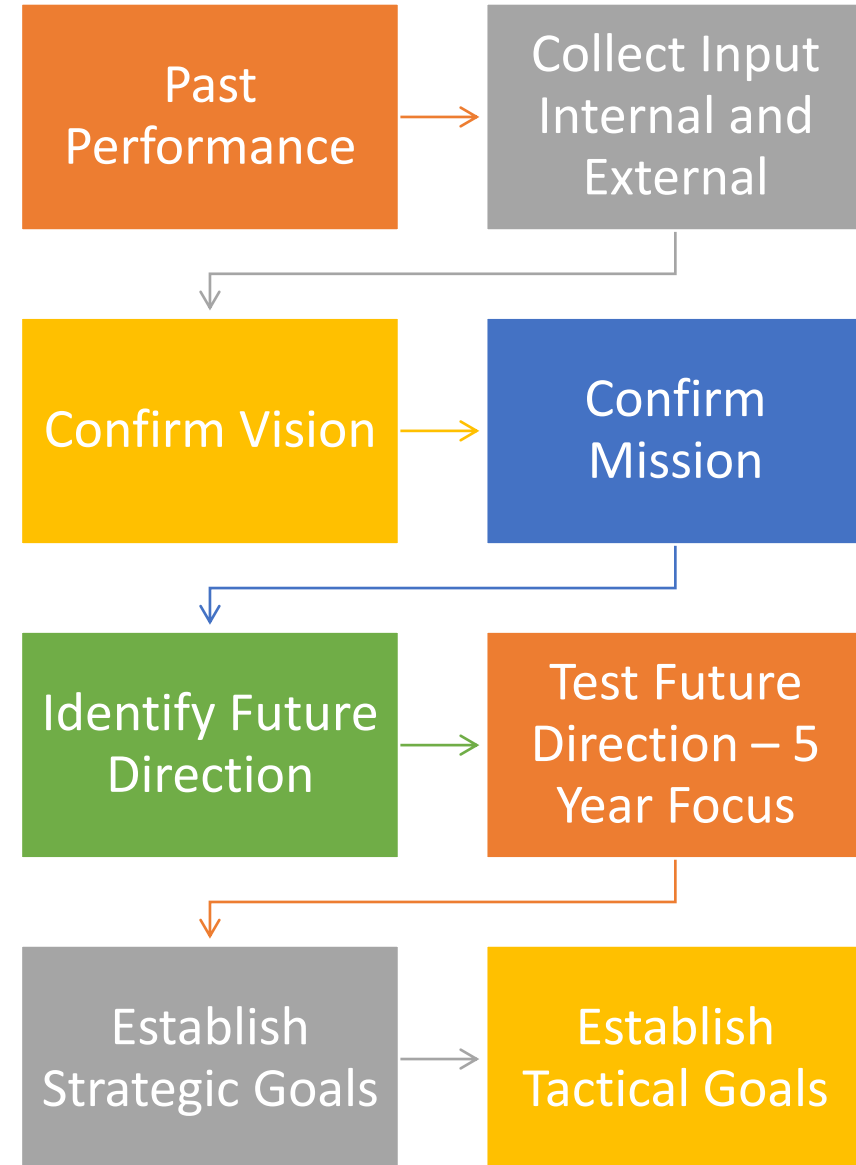
Force field Analysis



The Appreciative Inquiry 4-D Model



Strategic Planning Theory In Practice



Mid-Term Paper – Career Strategic Plan

Prepare a Written Analysis

What is your career Vision and Mission?

What strategic planning model did you use?

What is your Strategic Plan?

What is your plan for achieving your career plan? Your road map – tactical plan.

The analysis is to be no more than 5 typed pages (not including attachments) – 1” margins, 12pt font, double- spaced, and in APA format - Include as an attachment your current resume.



Mid-Term – Simulated Interview Video

Prepare a Video Presentation

In a video no longer than 2 minutes (simulating an interview) answer two questions –

one from the list below and one of your own choosing:

- o “Tell me a little about yourself”
- o “What is your story?”
- o “Why do you want this job?”
- o “What do you consider to be your three strengths and three weaknesses?”

You will be presenting your video in-class for feedback and reinforcement.

Session 9
04/06/22

- **Mid-Term Presentations**
- **Read Bolman and Deal
pages 179 -294**